

The logo consists of the numbers '833' in a bold, sans-serif font. The '8' and the first '3' are connected at the top, and the second '3' is slightly larger and positioned to the right. A registered trademark symbol (®) is located to the right of the second '3'.

**833**®

INSPIRED SOLAR TECHNOLOGY



# DAZZLING APPEARANCE

FULL BLACK FOR  
AESTHETIC BUILDING  
INTEGRATION

# HIGH POWER

## Electrical Characteristics at Standard Test Conditions(STC)

Module Type: SHINGLED	435	430	425	420
Maximum Power-Pm [W]	435	430	425	420
Open Circuit Voltage-Voc [V]	43.6	43.5	43.4	43.3
Short Circuit Current-Isc [A]	12.79	12.68	12.56	12.46
Maximum Power Voltage-Vm [V]	36.2	36.1	36.0	35.9
Maximum Power Current-Im [A]	12.02	11.92	11.81	11.71
Module Efficiency-n [%]	20.9	20.7	20.4	20.2

# 430W

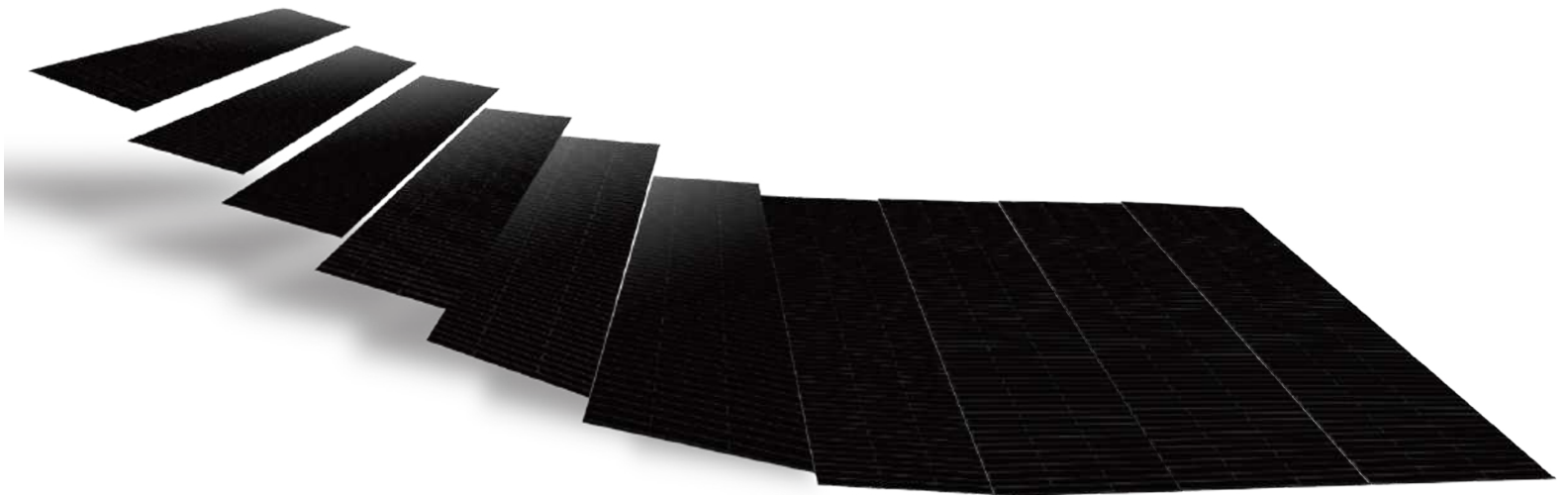
**1899\*1096\*30mm**

Industry leading high power  
module for residential applications



# INTRINSIC SAFETY

SEGMENTED CELLS,  
LOW CURRENT,  
EXCELLENT HOTSPOT RESISTANCE.



## FLEXIBLE INTERCONNECTION

Handle wind and snow load with ease



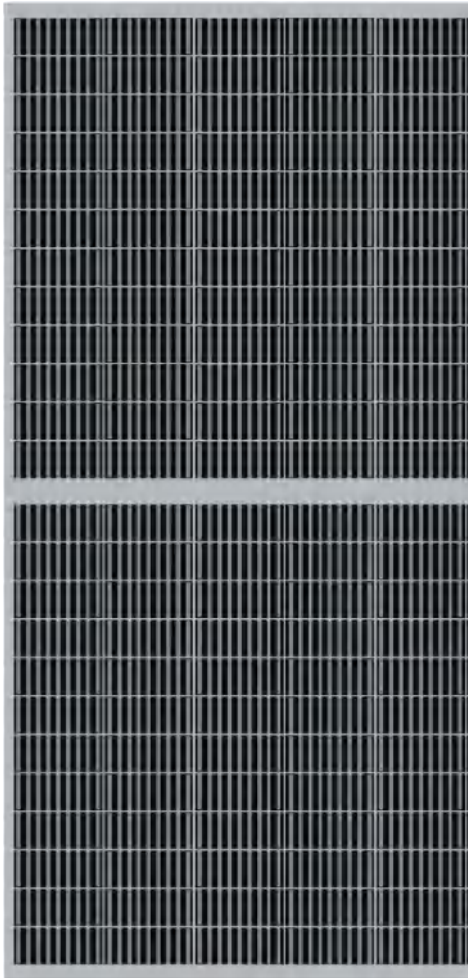
UPWARD LOAD



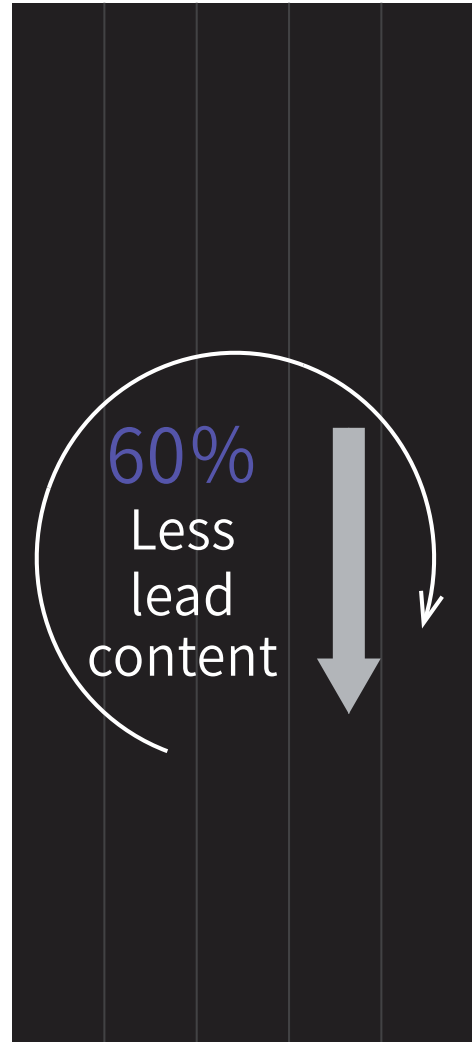
DOWNWARD LOAD



LOAD REMOVED



Half-cut module



Shingled technology

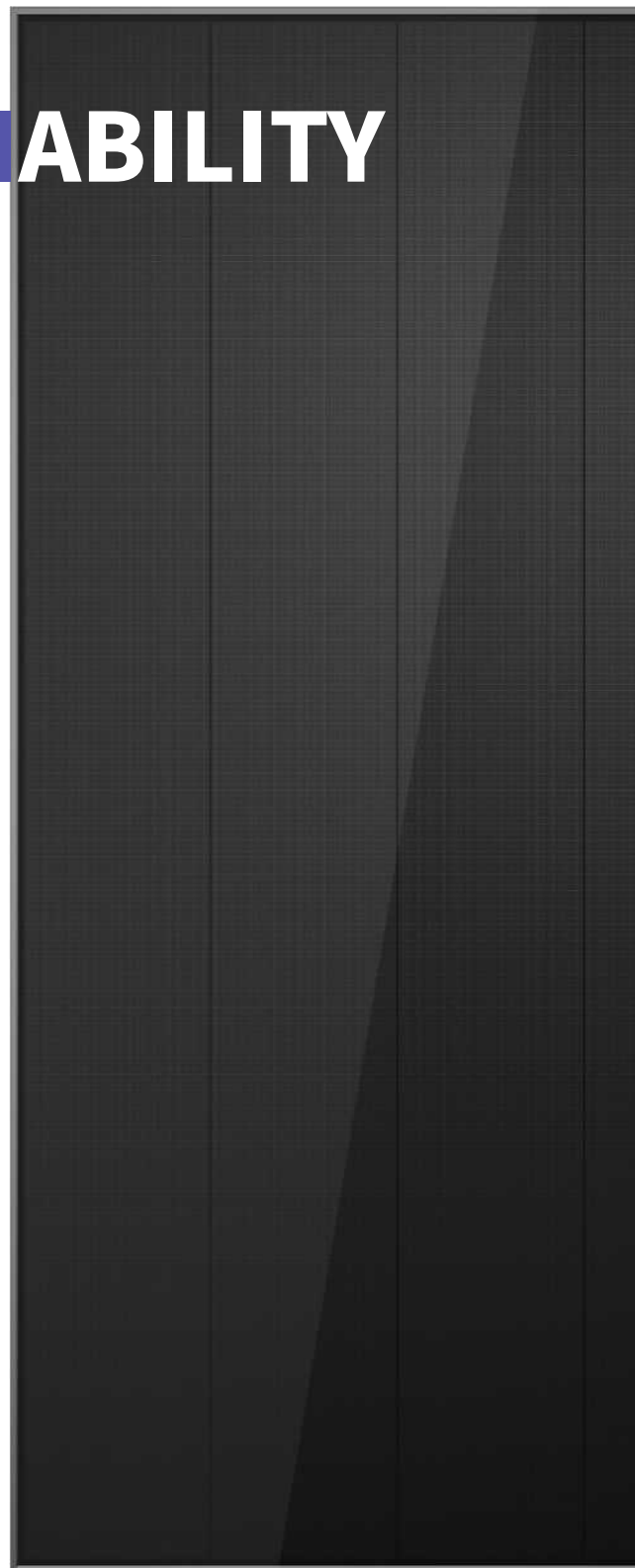
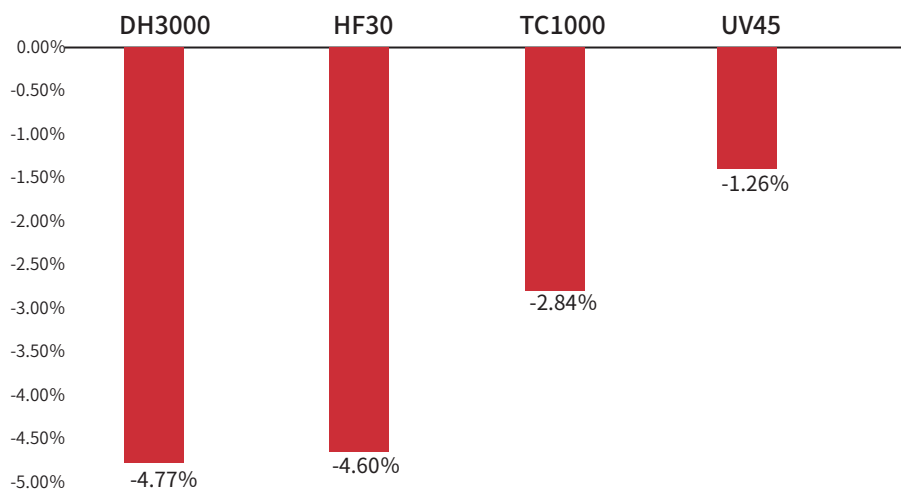
## ECO-FRIENDLY

Reduce environmental impact and simplify recycling process



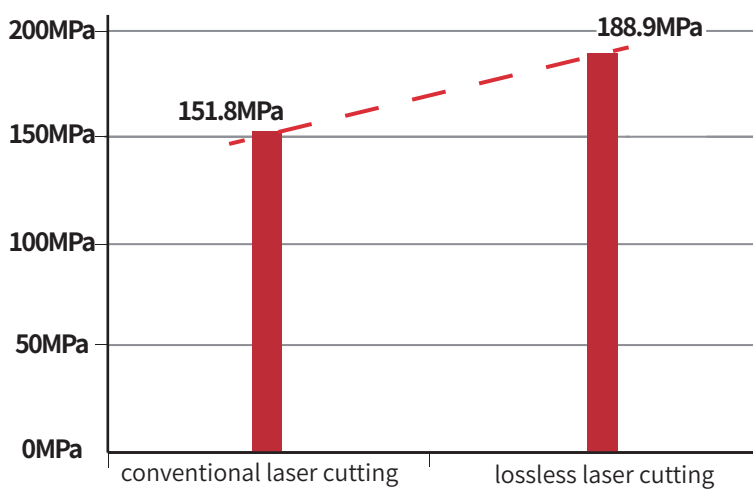
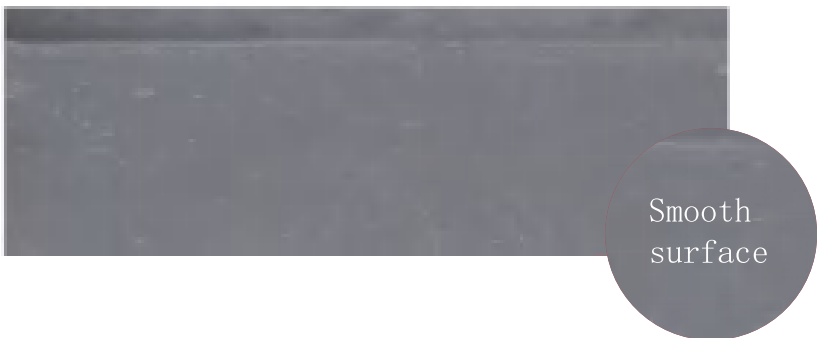
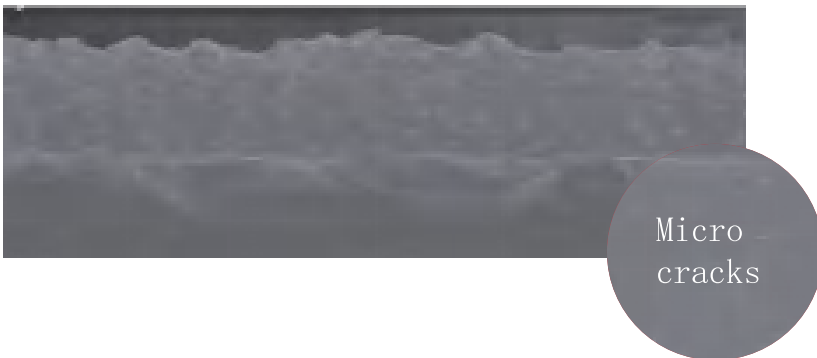
# EXCEPTIONAL RELIABILITY

## Multifold IEC Test Standards



# LOSSLESS LASER CUTTING

Avoid damage, high strength



mechanical strength : conventional laser cutting vs.lossless laser cutting